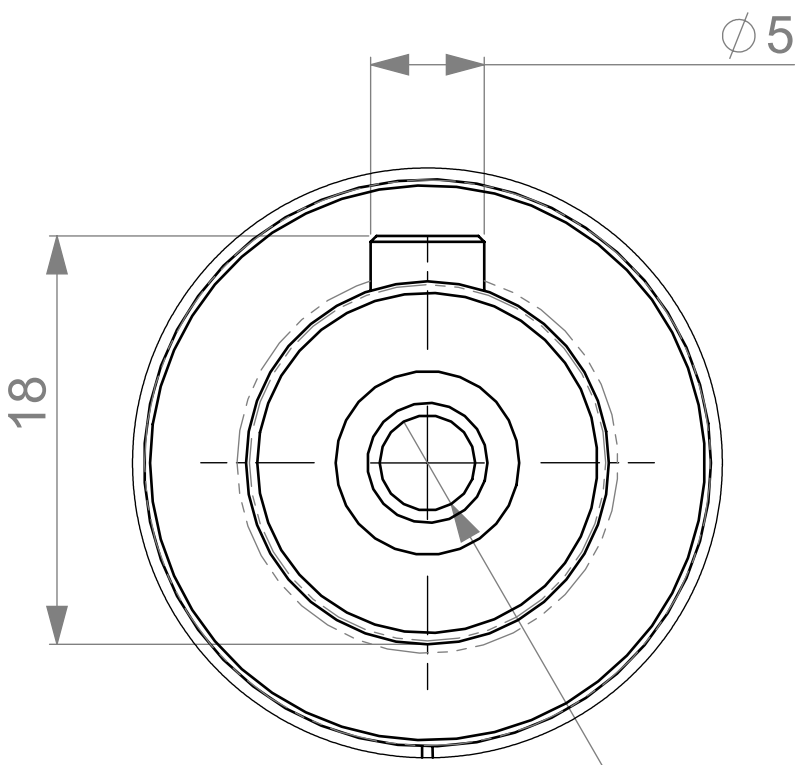


THE REPRODUCTION, DISTRIBUTION AND UTILIZATION OF THIS DOCUMENT AS WELL AS THE COMMUNICATION OF ITS CONTENTS TO OTHERS WITHOUT EXPRESS AUTHORIZATION BY ONVIO, LLC IS PROHIBITED. OFFENDERS WILL BE HELD LIABLE FOR THE PAYMENT OF DAMAGES. ALL RIGHTS RESERVED IN THE EVENT OF THE GRANT OF A PATENT, UTILITY MODEL, OR DESIGN.

SINGLE STAGE RATIOS

3-1
5-1
7-1
10-1

REVISIONS				
ZONE	REV.	DESCRIPTION	DATE	APPROVED
	A	INITIAL RELEASE	10/4/2019	BSL



DETAIL A
SCALE 3 : 1

Ø 4.20 ∇ 12.50
M5 - 6H ∇ 8.50
Ø 5.30 X 90°, Near Side

4 x THREAD

BOLT CIRCLE
Ø 100.00
63.00

4 X 90°

45°

93

133

36

Ø 16 k6
(+0.012
+0.001)

8

94

4 x Ø 4.20 ∇ 14
M5 - 6H ∇ 10
Ø 5.30 X 90°, Near Side

4 X 90°

A

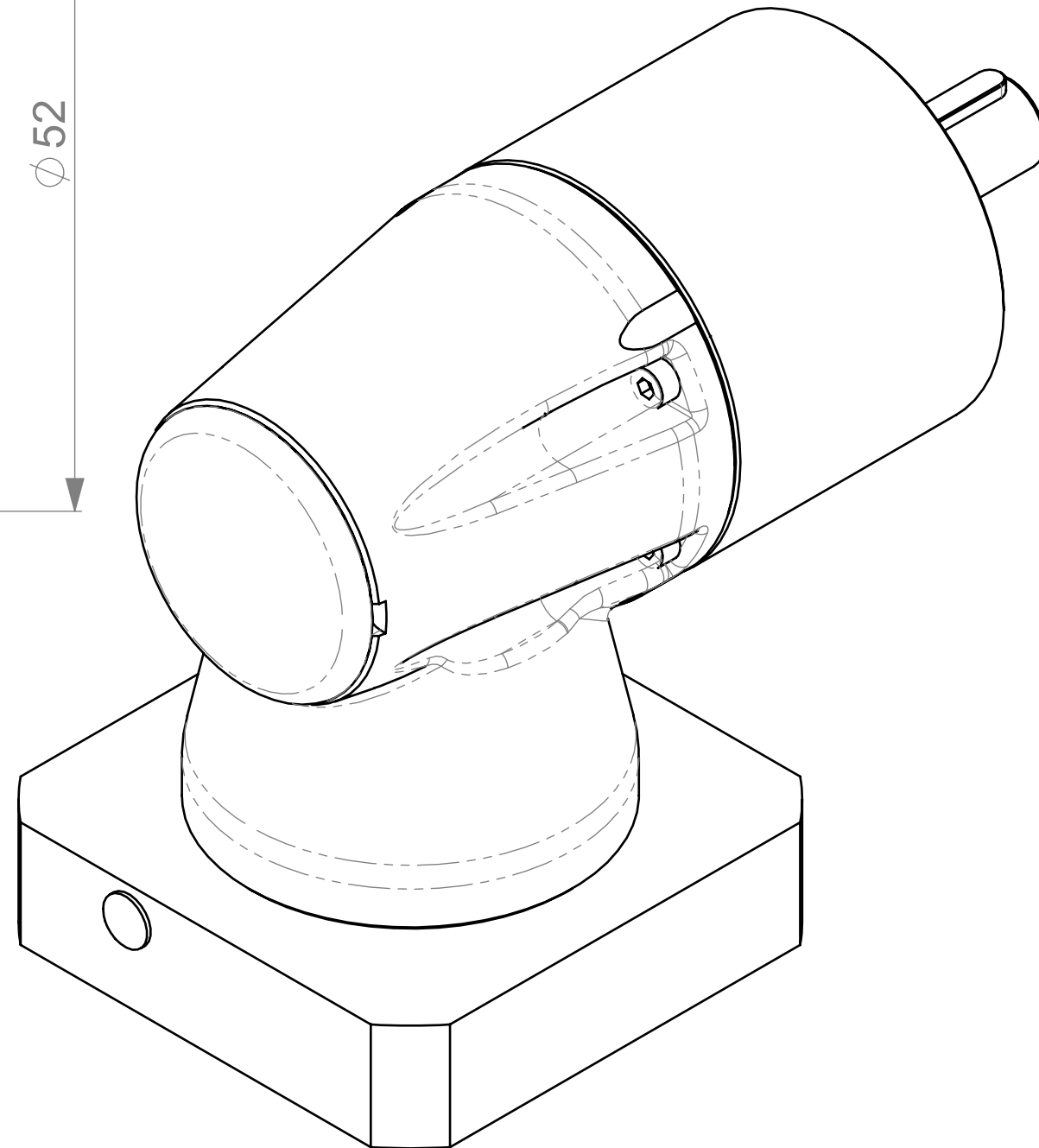
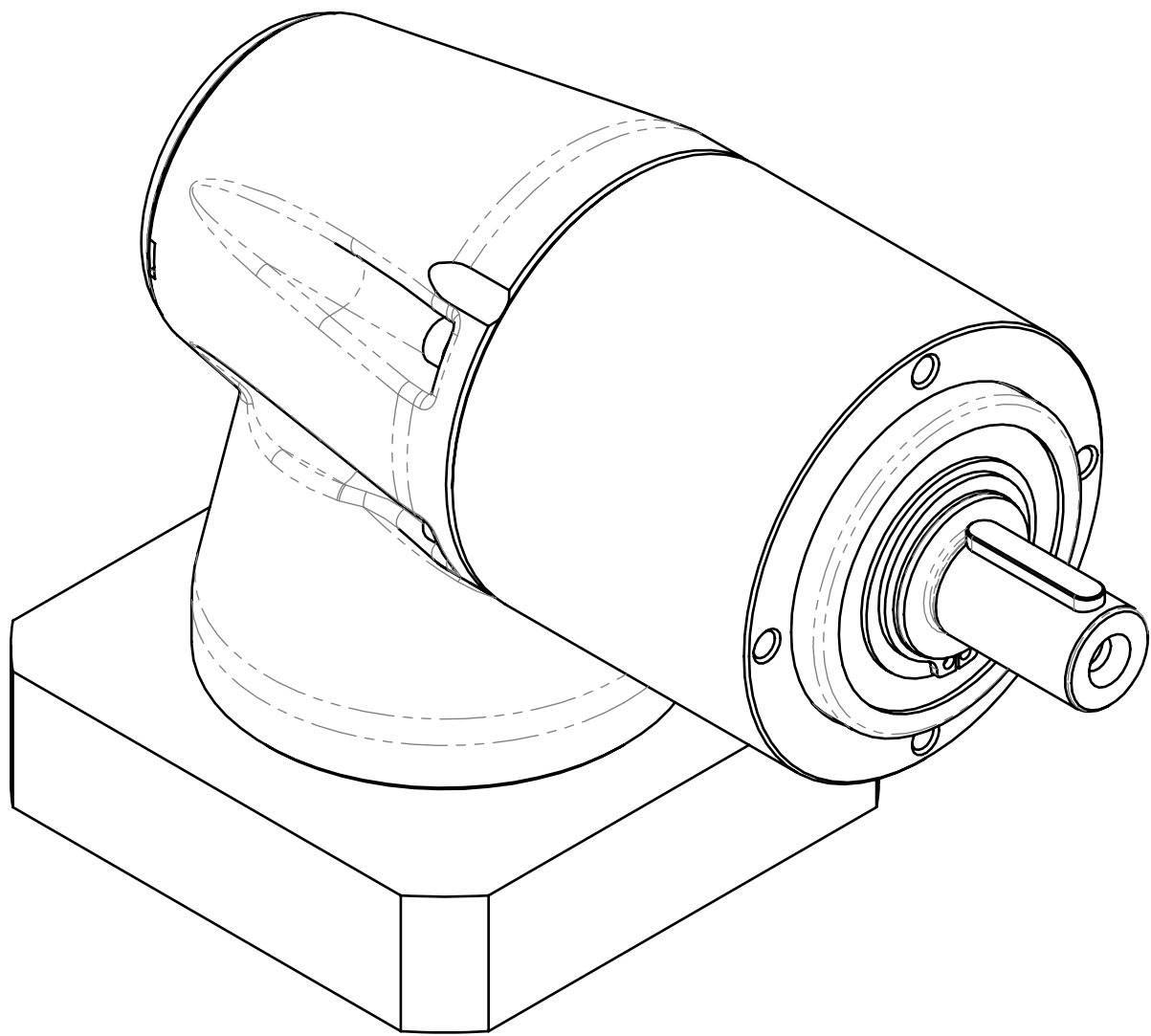
85.50

MOTOR SHAFT
LENGTH
MAX/MIN
40.00
25.00

BUSHING ID
16.00
6.00

PILOT
Ø 81.00
41.00

√ Ra 1.6 (✓)



DRAWN BY: BSL	DATE: 04OCT19	SCALE: 3:2	onvio	
CHECKED BY:	DATE:	UNSPECIFIED TOLERANCES PER ISO 2768 m K		
APPROVED BY:	DATE:	UNSPECIFIED EDGES PER ISO 13715 -0.4 -0.3 +0.3 +0.2	MATERIAL: FINISH:	
ALL DIMENSIONS IN MILLIMETERS			HEAT TREAT:	
PAPER SIZE A1	DOCUMENT TYPE DET	LANGUAGE CODE EN	SHEET NUMBER 1/3	PART NUMBER RL-010-0RR-FFF-MMM-S-LL-XXX-BXX-0000
RL-010, i=0RR, Family Variations, Interface SQ93, BC 63-100, PD 41-81, SL25-40, SD 6-1				REVISION Pre

CONFIGURATION DESCRIPTION

RL-010-0RR-FFF-MMM-S-LL-XXX-BXX-0000

0RR	
VALUE	GEAR RATIO
003	3-1
005	5-1
007	7-1
010	10-1

FFF	
VALUE	HOUSING FINISH
B01	BLACK OXIDE
N01	NICKEL
P01	PAINT, ORANGE

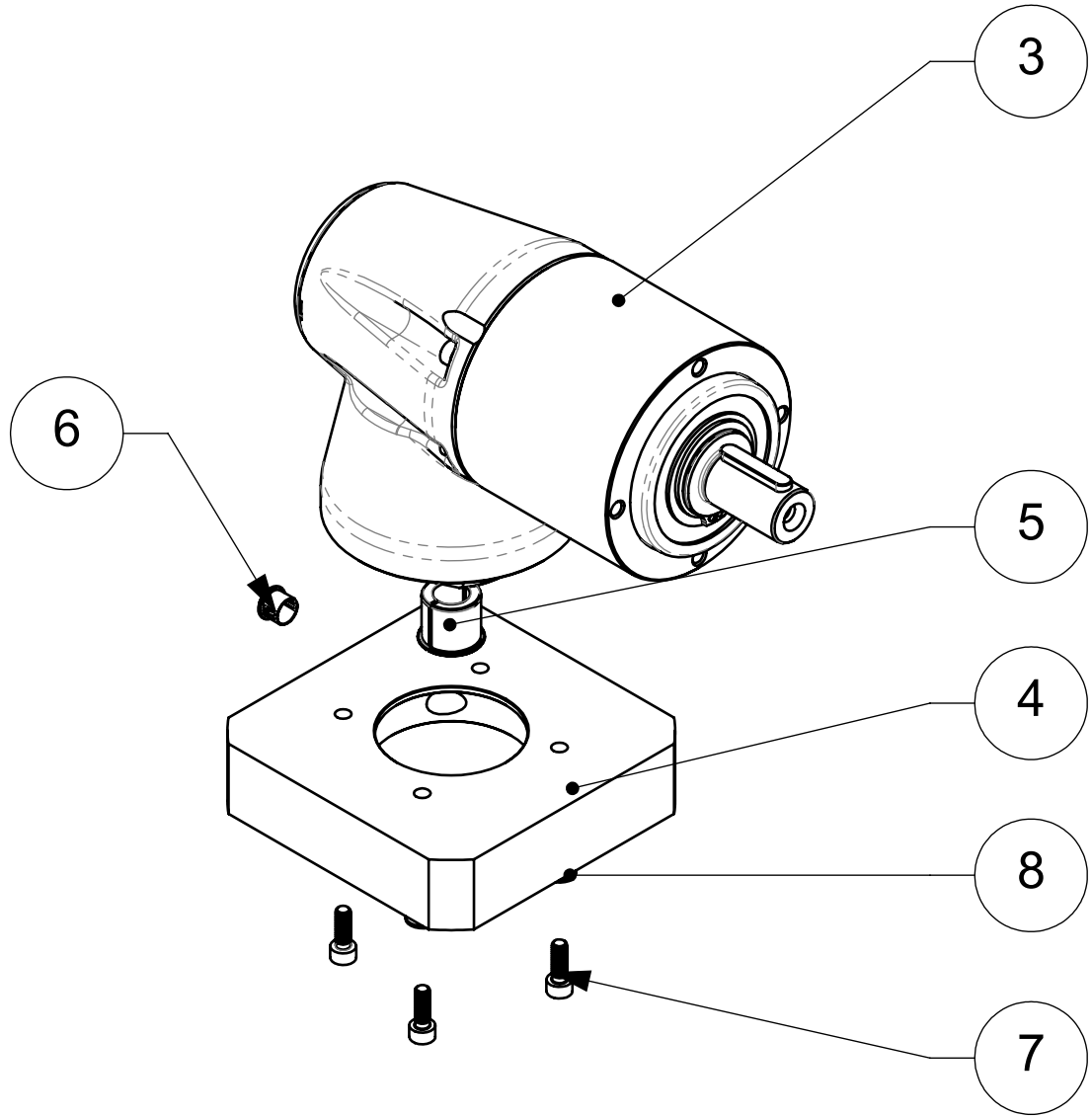
MMM	
VALUE	OUTPUT SHAFT MATERIAL
S01	4140 (STANDARD)
N01	4140 NICKEL PLATED
C01	304 STAINLESS STEEL
C02	316 STAINLESS STEEL

S	
VALUE	OUTPUT SHAFT STYLE
S	STANDARD KEY
N	NO KEY

LL	
VALUE	LUBRICATION
SL	STANDARD
FG	FOOD GRADE
LT	LOW TEMPERATURE
HT	HIGHT TEMPERATURE
LF	LOW FRICTION

BXX			
INTERFACE CONFIGURATION			
VALUE	BOLT CIRCLE	THREAD	PILOT
B01	66.68	#10-24	45
B02	70	M4	51
B03	75	M5	61
B04	80	M5	61
B05	63	M5	45
B06	63	M4	45
B07	63	M5	45
B08	66.675	#10-24	45
B09	66.675	M4	45
B10	66.675	M5	45
B11	66.675	#10-24	51
B12	66.675	M4	51
B13	66.675	M5	51
B14	70	M4	51
B15	70	M5	51
B16	70	M6	51
B17	75	M5	61
B18	75	M6	61
B19	90	M5	61
B20	90	M6	61
B21	99	M5	71
B22	99	M6	71
B23	90	M5	71
B24	90	M6	71
B25	98.425	#10-24	74

XXX	
VALUE	BUSHING ID
060	6
064	6.35 [0.25]
080	8
090	9
095	9.525 [0.375]
100	10
110	11
120	12
127	12.7 [0.50]
140	14
160	16



DRAWN BY: BSL	DATE: 04OCT19	SCALE: 1:1	onvio	
CHECKED BY:	DATE:	UNSPECIFIED TOLERANCES PER ISO 2768 m K		
APPROVED BY:	DATE:	UNSPECIFIED EDGES PER ISO 13715	MATERIAL: FINISH:	
ALL DIMENSIONS IN MILLIMETRES		-0.4 -0.3	+0.3 +0.2	RL-010, i=0RR, Family Variations, Interface SQ93, BC 63-100, PD 41-81, SL25-40, SD 6-1
PAPER SIZE: A1	DOCUMENT TYPE: DET	LANGUAGE CODE: EN	SHEET NUMBER: 2/3	
PART NUMBER: RL-010-0RR-FFF-MMM-S-LL-XXX-BXX-0000				REVISION: Pre